

# South Atlantic Conservation Blueprint

## South Atlantic Landscape Conservation Cooperative

Rua Mordecai



# Goal of the Tool/ Effort

- ◆ A living spatial plan to conserve natural and cultural resources for future generations
- ◆ It identifies shared conservation priorities across the South Atlantic region
- ◆ Used to bring in new conservation resources and use existing resources more efficiently
- ◆ Part of a larger goal for a 10% or greater improvement in the health, function, and connectivity of Southeastern ecosystems by 2060

# What data goes into your tool/effort?

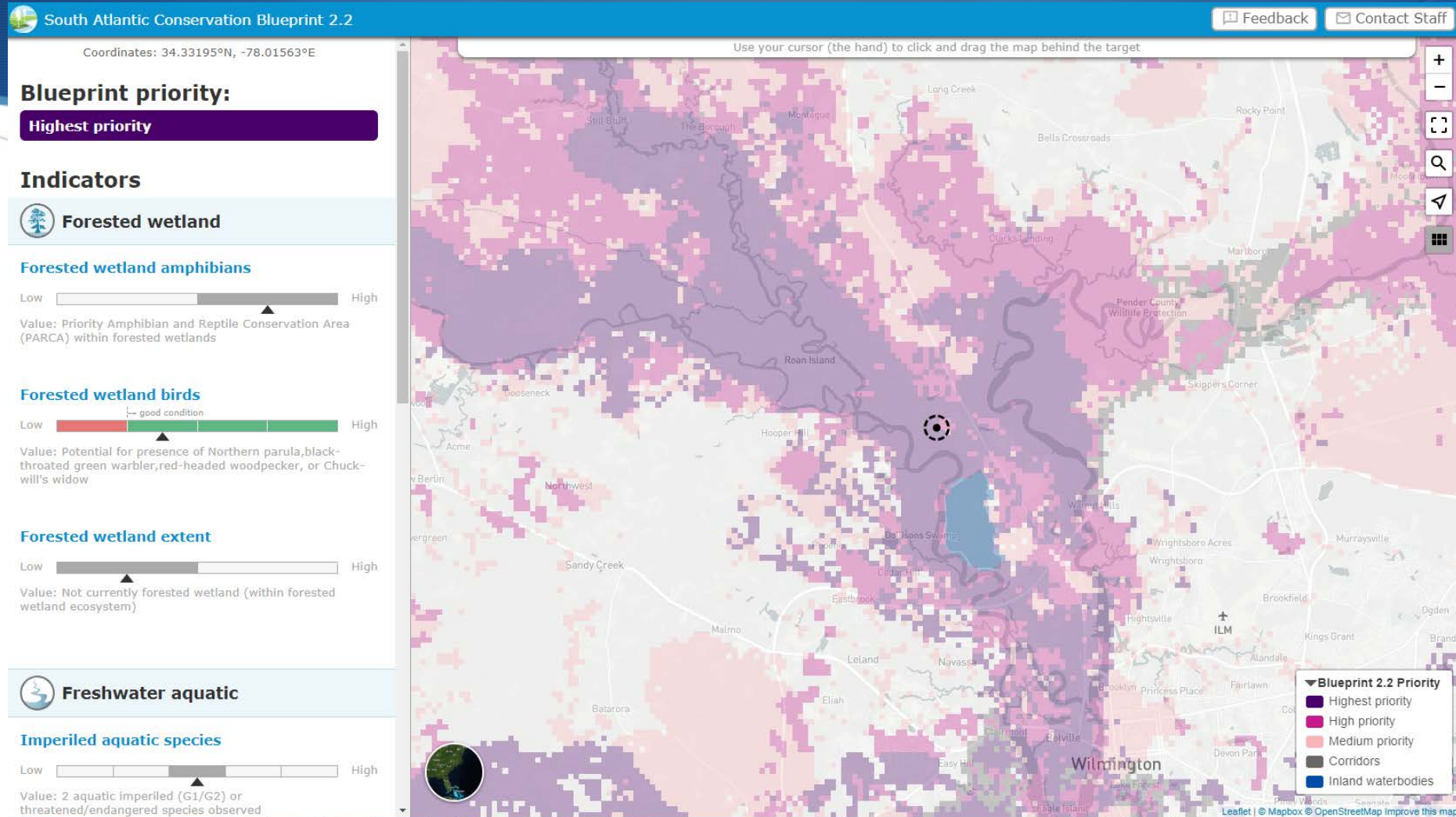
## Data Layers

- ◆ Terrestrial, freshwater, marine, and cross-ecosystem indicators.
- ◆ Integrated priority layer based on those indicators and a connectivity analysis
- ◆ Hub and corridors

## Tool analytics

- ◆ HUC12 subwatershed summaries of ecosystem indicators, priorities, urban growth, and sea-level rise
- ◆ 200m pixel summaries of ecosystem indicators
- ◆ User support staff available to help to use Blueprint information

# Show 1-3 Static Screenshots of your Tool



[blueprint.southatlanticlcc.org](http://blueprint.southatlanticlcc.org)

# Use and Integration

- ◆ More than 100 people from over 50 different organizations have used, or are in the process of using, the Blueprint
- ◆ Can provide a regional lens to compliment existing local data and tools
- ◆ Updated and improved every 1 - 2 years. Currently on Version 2.2

# Questions?

Rua Mordecai ([rua\\_mordecai@fws.gov](mailto:rua_mordecai@fws.gov), 919-707-022)

